

**FIRE ALARM ANCILLARIES**

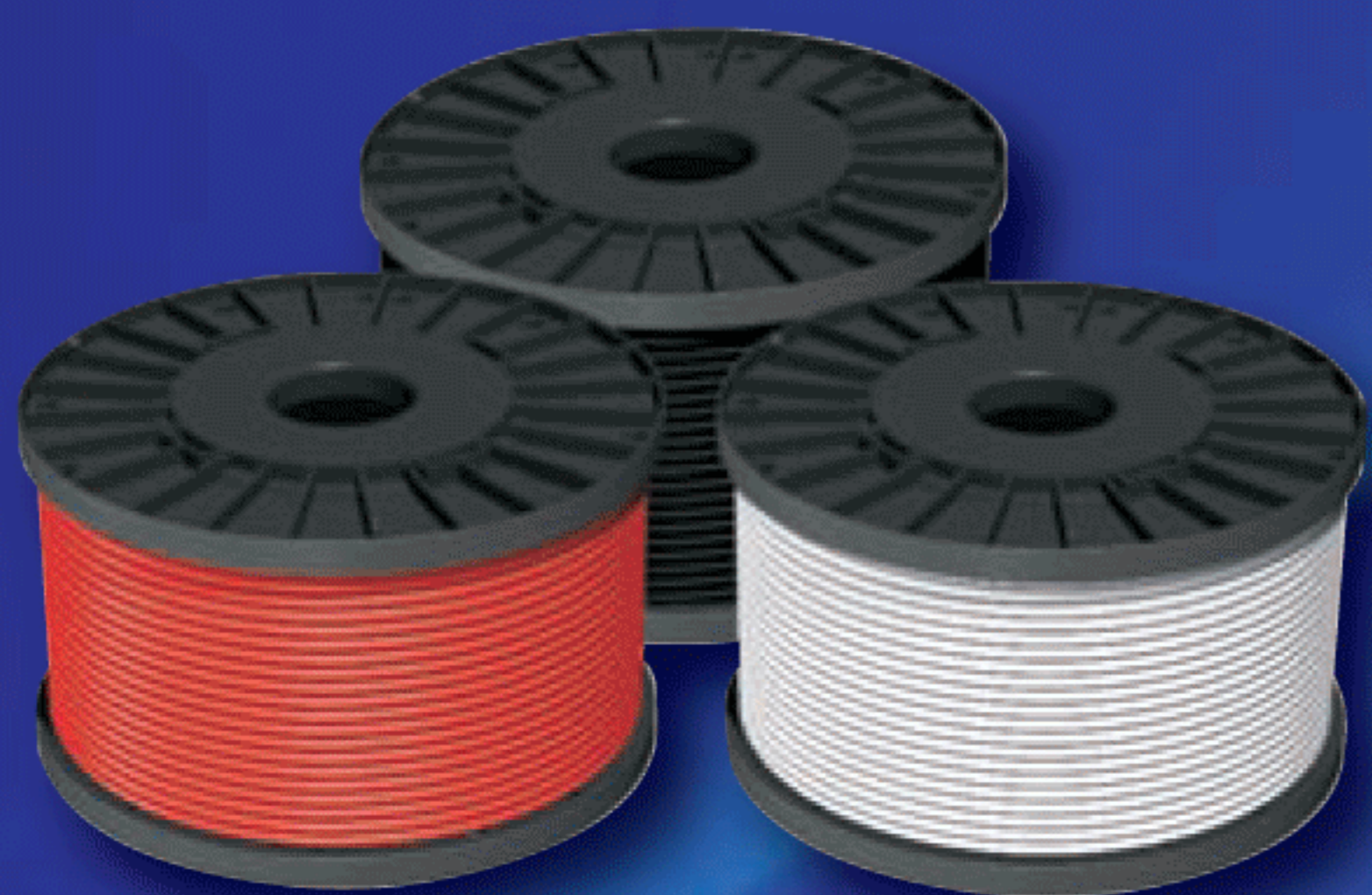
**STANDARD FIRE PERFORMANCE CABLE**



Context Plus 'Standard' Fire Performance Cable has been independently tested and approved by the LPCB to meet BS 5839-1:2002+A2:2008 Clause 26.2d Standard, BS EN 50200:2006+Annex E 30 minutes, and BS EN 50200:2006 PH120 - under fire conditions.

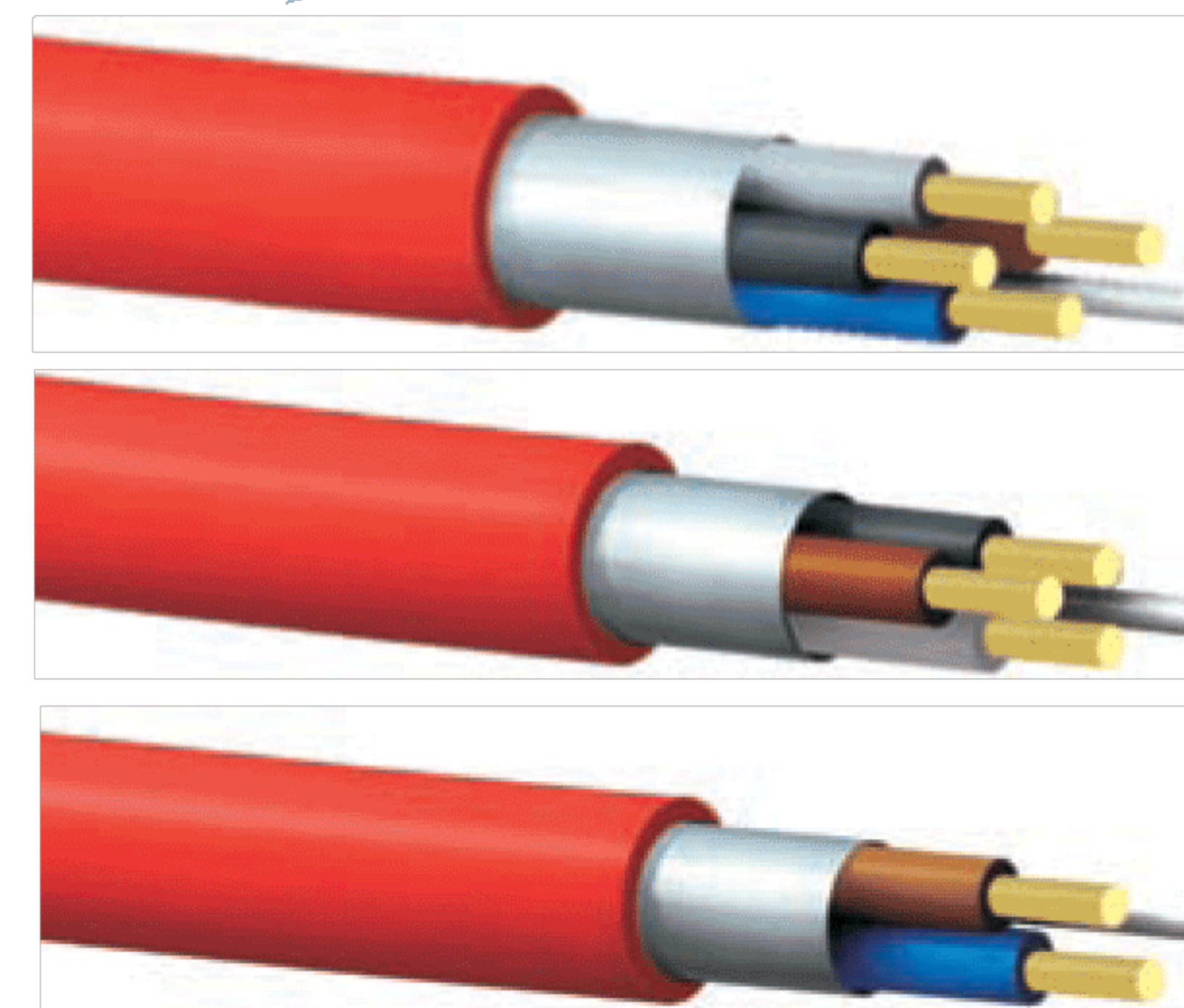
Materials and processes are recorded and tracked throughout manufacture to ensure consistent reliability and quality.

Cable cores are twisted during manufacture to provide the highest level of data protection, ideal for long cable runs and analogue addressable fire systems.



Context Plus Standard Fire Cable

- Manufactured in the United Kingdom with a ten year warranty.
- Low Smoke Zero Halogen emissions under fire conditions.
- Easy to install and superb working flexibility
- Reduced installation time and costs
- All in one - easy to strip outer sheath
- No separate foil or additional fibre wraps
- No mica tape on conductors
- No additional core separators to remove
- Available in a variety of multi-core combinations all with CPC (circuit protection conductor)
- 100m, 200m and 500m reels (other special lengths available to order)
- Approved to meet a 3 hours only fire duration at 950°C & 2 hours fire and mechanical shock duration at 830°C.
- Retains continuity for 30 mins under fire conditions at 830°C including 15 mins under fire & water conditions and with a mechanical shock applied every 5 minutes during the full 30 minute test.
- Approved and Certified to meet
  - BS 5839-1:2002+A2:2008 - 'Standard' Fire Cable
  - BS EN 50200:2006+Annex E 30 mins - Fire Resistance Standard
  - BS EN 50200:2006 PH120 - Fire Resistance Standard
  - BS 7629-1:2008 - Fire Resistance Standard
  - BS 6387:1994 Clause 11 CWZ - Fire Resistance Standard
  - BS EN 50267-2-1:1999 - Halogen Emission Standard
  - BS EN 61034-2:2005 - Low Smoke Standard
- Also suitable for
  - Emergency Lighting Standard - BS 5266-1:2005
  - Voice Alarm Systems Standard - BS 5839-8:2008
  - Voice Communication Standard - BS 5839-9:2003
  - (Risk Assessment May Demand Mechanical Protection)



Certificate No. 682a-(cl-3)

**PART NUMBERS**

|                    | 2 Cores    | 3 Cores   | 4 Cores   |
|--------------------|------------|-----------|-----------|
| <b>Red</b>         |            |           |           |
| 1.0mm <sup>2</sup> | FPS-210ER  | FPS-310ER | FPS-410ER |
| 1.5mm <sup>2</sup> | FPS-215ER  | FPS-315ER | FPS-415ER |
| 2.5mm <sup>2</sup> | FPS-225ER  | FPS-325ER | FPS-425ER |
| 4.0mm <sup>2</sup> | FPS-S240ER |           |           |
| <b>White</b>       |            |           |           |
| 1.0mm <sup>2</sup> | FPS-210EW  | FPS-310EW | FPS-410EW |
| 1.5mm <sup>2</sup> | FPS-215EW  | FPS-315EW | FPS-415EW |
| 2.5mm <sup>2</sup> | FPS-225EW  | FPS-325EW | FPS-425EW |
| 4.0mm <sup>2</sup> | FPS-S240EW |           |           |
| <b>Black</b>       |            |           |           |
| 1.5mm <sup>2</sup> | FPS-215EBK |           | FPS-415BK |
| 2.5mm <sup>2</sup> | FPS-225EBK |           |           |

\*All above are solid core except FPS-S240ER which is stranded.

**Technical Data**

**Recommended metal clip spacing:** 300mm Horizontal or 400mm Vertical  
**Minimum installation Temperature:** 0°C  
**Maximum installation Temperature:** 70°C  
**Operating Temperature:** Min -40°C to Max +90°C.  
 The cable should not be flexed or bent when either the cable or operating temperature is outside the recommended installation temperatures.  
**Minimum Bend Radius:** 6 x Diameter  
 Plastic clips or ties must not be used as the sole means of support for fire cable.  
**Materials**  
**CPC (Earth):** Tinned Annealed Copper  
**Conductors:** Plain Annealed Copper  
**Core Installation:** Fire Resistant Silicone  
**Screening:** Aluminium Foil  
**Outer Sheath:** Low Smoke Halogen Free Thermoplastic  
**Working Voltage:** Core to Core: = 500V; Core to CPC = 300V  
**Outer Sheath Colours:** Red, White or Black  
**Number of Cores:** 2, 3 & 4 Core  
**Inner Cores CSA:** 1.0, 1.5, 2.5 & 4.0mm CSA

**Resistance:**  
**1.0mm CSA:** 18.1 Ohms / 1Km    **1.5mm CSA:** 12.1 Ohms / 1Km  
**2.5mm CSA:** 7.41 Ohms / 1Km    **4.0mm CSA:** 4.61 Ohms / 1Km  
**Current rating:**  
 1.0mm Cable clipped (DC or single phase AC) = 15A  
 1.5mm Cable clipped (DC or single phase AC) = 19.5A  
 2.5mm Cable clipped (DC or single phase AC) = 27A  
 4.0mm Cable clipped (DC or single phase AC) = 36A  
 1.0mm Enclosed (DC or single phase AC) = 13A  
 1.5mm Enclosed (DC or single phase AC) = 16.5A  
 2.5mm Enclosed (DC or single phase AC) = 23A  
 4.0mm Enclosed (DC or single phase AC) = 30A  
 Ratings listed are at 30°C, refer to BS7671/EE wiring refs for de-rating factor

